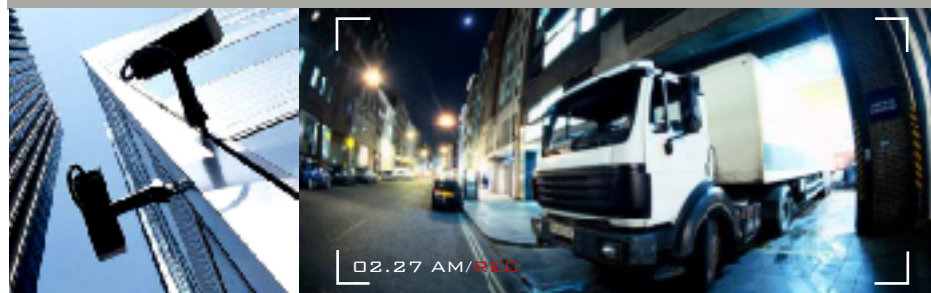


# IP-BASED CLOSED CIRCUIT TV (CCTV) SOLUTION

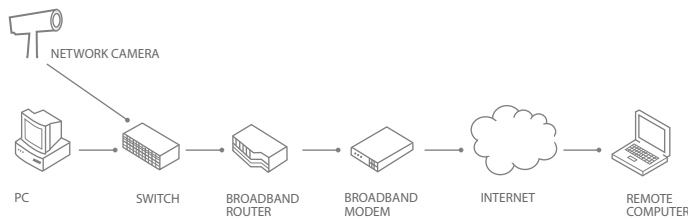
Now, with an increased need for greater security, CCTV is the obvious answer. Modern IP-based CCTV systems can be linked to anywhere delivering clear, live images reliably and quickly to help prevent crime. Tricubés IP-based CCTV systems can be used anywhere: in banks, airports, train stations, bus terminals, busy public roads and in the quietest neighbourhoods. Another commonly overlooked advantage of a CCTV system is its ability to stop crime before it's committed: the potential criminal can never be sure if someone's watching. And stopping crime is always a good thing.

*Tricubés IP-based CCTV-stopping crime before it's committed.*

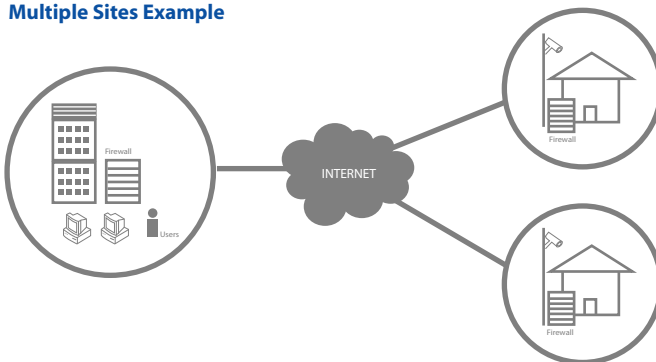


## CCTV SOLUTION

### Broadband Connection



### Multiple Sites Example



For more information visit us at:

<http://www.tricubes.com>

#### Head Office

**Tricubés Berhad**  
 Suite 13.1, Level 13, Menara Great Eastern,  
 303 Jalan Ampang, 50450 Kuala Lumpur  
 Malaysia  
 Phone: +603.4264.4000 Fax: +603.4264.4100

#### Product Development

**Tricubés Computers Sdn Bhd**  
 Lot 3-2 Incubator 3, Technology Park Malaysia,  
 Bukit Jalil, 57000 Kuala Lumpur  
 Malaysia  
 Phone: +603.8994.6066 Fax: +603.8996.0264  
 □

### Camera System

IP-Based CCTV camera - direct connection to the existing/new Local Area Network switch/hub or Wireless LAN

Analogue CCTV camera - convert to IP-Based system by adding Network Video Server.

### Network video Server

Built-in hard drive for local recording

Built-in with motion detector for un-manned monitoring

Built-in web server for viewing from Internet browser.

### Software application

A centralised Windows-based software application. Over LAN/WAN networks for multiple sites monitoring.

### Benefits of our solution

Improves the level of security.

Provides a safe environment.

Reduces massive video and data cabling, thus reducing deployment and maintenance costs.

Works with any type of CCTV camera.

Multiple remote sites can be monitored from a central security centre.